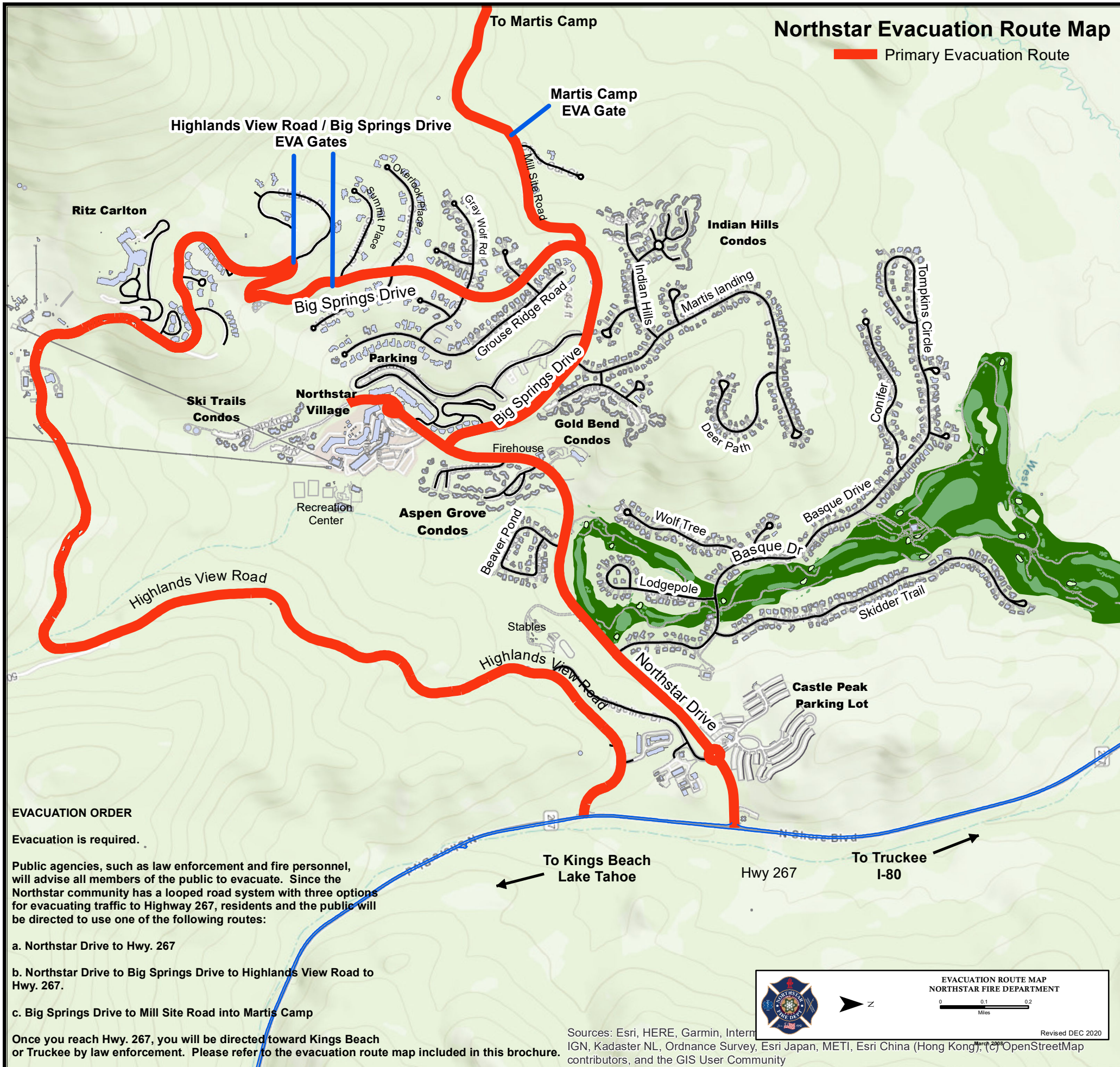


# Northstar Evacuation Route Map

 Primary Evacuation Route



**IF YOU ARE TEMPORARILY STAYING OR VACATIONING HERE AT NORTHSTAR, YOU SHOULD KNOW THE FOLLOWING IMPORTANT INFORMATION.**

### For Emergencies:

- ❖ Contact 911
- ❖ It is extremely important to share with the Dispatcher the address of the residence, which is:
  - (A sticker will be placed in this location when issued to the STR manager or owner.)

### For Evacuation:

- ❖ Text/email messaging is the main way the District and the County alerts its citizens of a mandatory evacuation and provides instructions to follow. (See the flier "Know Your Alerts".)
  - To sign up for Nixle to receive text messages from the Northstar Fire Department simply text "Northstar" to 888777. You will be sent back a confirmation message advising that you are registered. In order to sign up for e-mail messages go to <http://www.northstarcsd.org/departments/fire/nixle-connect> and follow the instructions to sign up as a user.
  - To sign up for Placer Alert text/messaging so that you may receive alerts from Placer County go to [www.placer-alert.org](http://www.placer-alert.org). Follow the instructions per the website.
- ❖ If you receive a Nixle or Placer Alert message stating to "Evacuate Now", do not wait. Go!
- ❖ Listen for the sirens. Various emergency vehicles will be driving throughout the District sounding their Hi-Lo sirens (European sounding – different than the normal sounding sirens in the U.S.) announcing evacuation.
- ❖ There are 3 routes that can be traveled to exit the District: Highlands View Drive, Northstar Drive and Mill Site Road. The evacuation map depicts these 3 routes. The Nixle message will provide you with instructions on the safest routes to travel.
- ❖ When trying to exit the District, follow the instructions that may be advertised on various posted road/electronic signs as well as the authorities that may be helping to direct traffic.

### Key Terms to Understand:

**Red Flag Warning** – is issued for weather events which may result in extreme fire behavior that will occur within 24 hours. Northstar Fire Department urges its citizens to be extremely cautious, especially during periods of high fire danger. It's important all residents and visitors take steps to prevent wildfires.

**Particularly Dangerous Situation (Red Flag Warning)** – is issued for weather events which may result in fire behavior that is explosive in growth, burn very intensely and be uncontrollable that will occur within 24 hours. Northstar Fire Department urges its citizens to be extremely cautious, especially during periods of high fire danger. It's important all residents and visitors take steps to prevent wildfires. When this warning is issued, be judicious by reviewing our evacuation routes and being prepared to act quickly if a fire breaks out.

**Shelter-in-Place** – means finding a location indoors and staying there until you are given an "all clear". You may receive a Nixle message informing you to "shelter-in-place" as opposed to evacuating.


### EVACUATION ORDER

Evacuation is required.


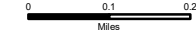
Public agencies, such as law enforcement and fire personnel, will advise all members of the public to evacuate. Since the Northstar community has a looped road system with three options for evacuating traffic to Highway 267, residents and the public will be directed to use one of the following routes:

- a. Northstar Drive to Hwy. 267
- b. Northstar Drive to Big Springs Drive to Highlands View Road to Hwy. 267.
- c. Big Springs Drive to Mill Site Road into Martis Camp

Once you reach Hwy. 267, you will be directed toward Kings Beach or Truckee by law enforcement. Please refer to the evacuation route map included in this brochure.



EVACUATION ROUTE MAP  
NORTHSTAR FIRE DEPARTMENT

Revised DEC 2020

Sources: Esri, HERE, Garmin, Intermap, IGN, Kadaster NL, Ordnance Survey, Esri Japan, METI, Esri China (Hong Kong), Swisstopo, DeLorme, NAVTEQ, and the GIS User Community

Scan the below QR code on a mobile device for a mobile version of this map

